

FOR AN APPLICATION CALL:

**Rick at
The Hodges Companies
(Be sure to mention Harriman Hill)
1-800-742-4686**

**or visit
www.lact.org**

Harriman Hill Apartments

**Owned by
Eastern Lakes Housing Coalition
and
Laconia Area Community Land Trust**

**Proudly & Professionally Managed by
The Hodges Companies
201 Loudon Road
Concord, NH 03301**

**Applicants must meet income and
resident selection guidelines.**



**Laconia Area Community Land Trust
658 Union Avenue
Laconia, NH 03246
www.lact.org
603-524-0747**



**Laconia Area
Community
Land Trust**

*Building Neighborhoods,
Changing Lives*



**TAKING APPLICATIONS NOW
FOR JANUARY 2012 OCCUPANCY**

**Harriman Hill
Apartments**

**Pine Hill Road (Rt. 109A)
Wolfeboro, NH
24 1-3 BEDROOM UNITS**

**PERMANENTLY AFFORDABLE
APARTMENTS**

Looking for an apartment you can afford? Consider making Harriman Hill your home!



Harriman Hill offers permanently affordable housing for families working in the Wolfeboro Area.

Location

Located on Pine Hill Road (Rt. 109A) in Wolfeboro, 1/2 mile from Wolfeboro Falls and 1 mile from downtown Wolfeboro.

Amenities

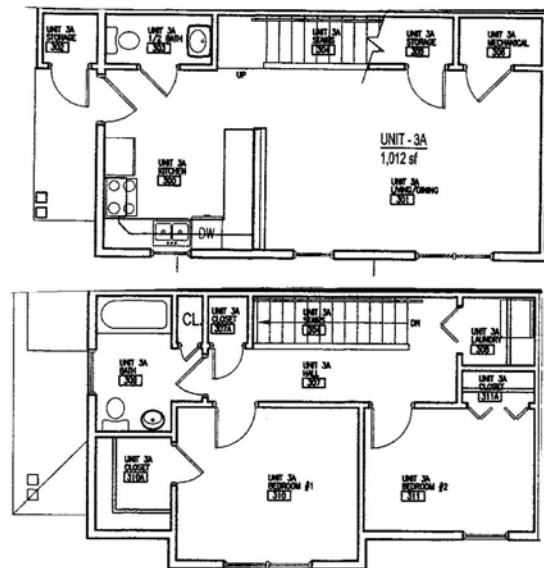
These large, newly constructed apartments feature EnergyStar® appliances (including refrigerator, stove, dishwasher, washer, and dryer), personal storage area, recreational trails, and plenty of parking. Townhouse style units have 1 and 1/2 baths.

Rents

\$565 to \$951 per month heat and hot water included.

Typical Floor Plan

2-bedroom town-house style apartment



More styles available.

Income Guidelines

Rentals are subject to applicant meeting income and tenant selection guidelines. Households may earn up to the following limits:

- 1-Person Household: \$29,160
- 2-Person Household: \$33,360
- 3-Person Household: \$37,500
- 4-Person Household: \$41,640
- 5-Person Household: \$45,000
- 6-Person Household: \$48,360

Take our eligibility quiz at www.lact.org.



FOR MORE INFO ON RENTALS →

Developed and Owned by

**EASTERN LAKES REGION HOUSING COALITION
AND
LACONIA AREA COMMUNITY LAND TRUST**